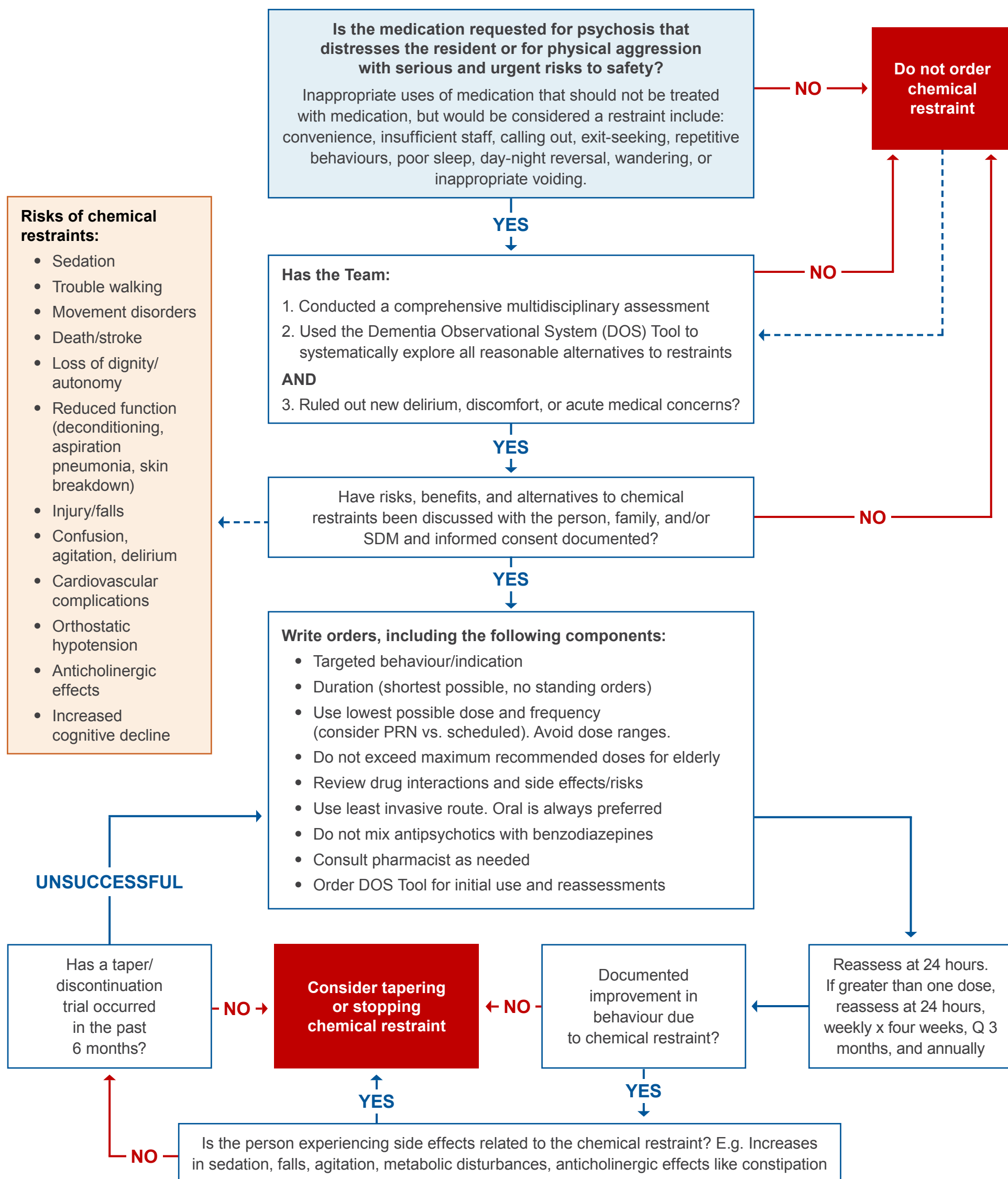


LTC Chemical Restraint Prescribing Algorithm

All restraints (environmental, physical, mechanical and pharmacological) **increase morbidity and mortality** and are a **last resort** for aggressive behaviours with serious risks to safety, and are unsuccessfully mitigated by other interventions. Least Restraint Possible is a team responsibility involving ongoing communication, collaborative problem-solving and evaluation. Some examples of chemical restraints include: antipsychotics, benzodiazepines, and nabilone.



Typical onset: PO (IR) 30 to 60 mins, SL 15 to 30 mins, IM 15 mins, Intranasal 10 mins, and SubQ varies
 *general guidelines only, see product monographs and consider altered pharmacokinetics of the elderly