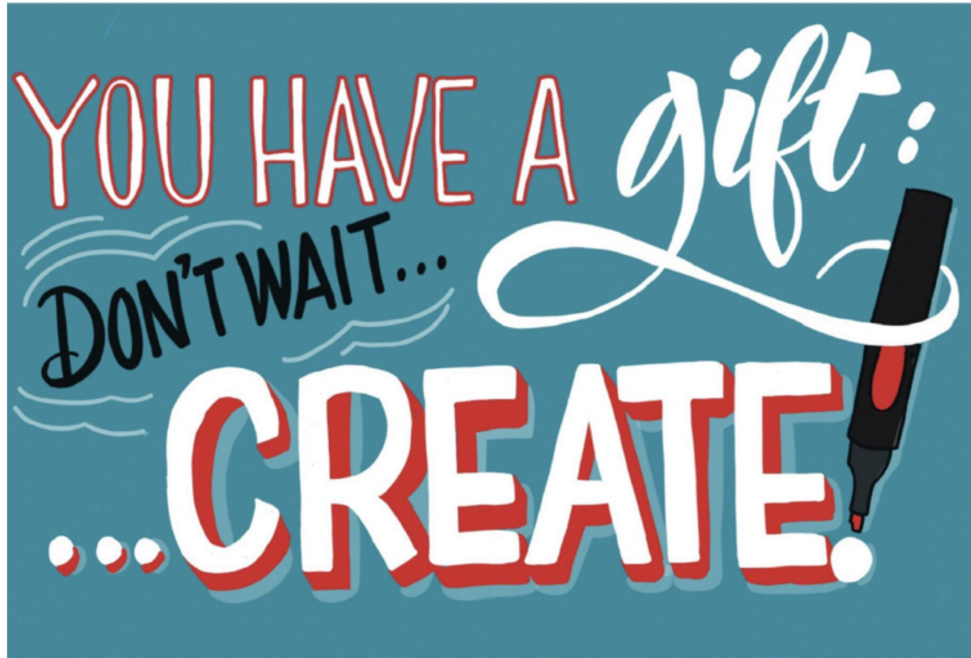


Welcome!



Drawing Change and the CATs: 2021 Workshop

Listen with **EMPATHY**.

Bring a **LEARNING MINDSET** instead of an expert mindset.

Make **SPACE**, take space.

Embrace a **SAFE SPACE** – *What's said here stays here. What's learned here leaves here.*

Be cognizant of **POWER AND PRIVILEGE**.

Bring your **WHOLE SELF**; *we welcome kids, chaos and furry friends.*

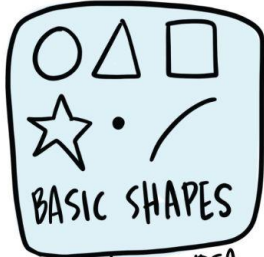


wacom

SKETCHNOTES 101

with Drawing change

SKETCHNOTE BUILDING BLOCKS



draw to get the IDEA across



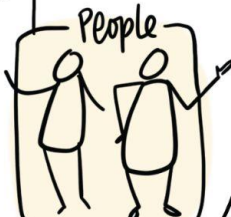
Stick to 3



different connections



organize the information



People and Faces 😊

ANYONE can:

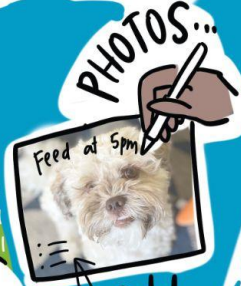


DRAW

AHA!



Work together



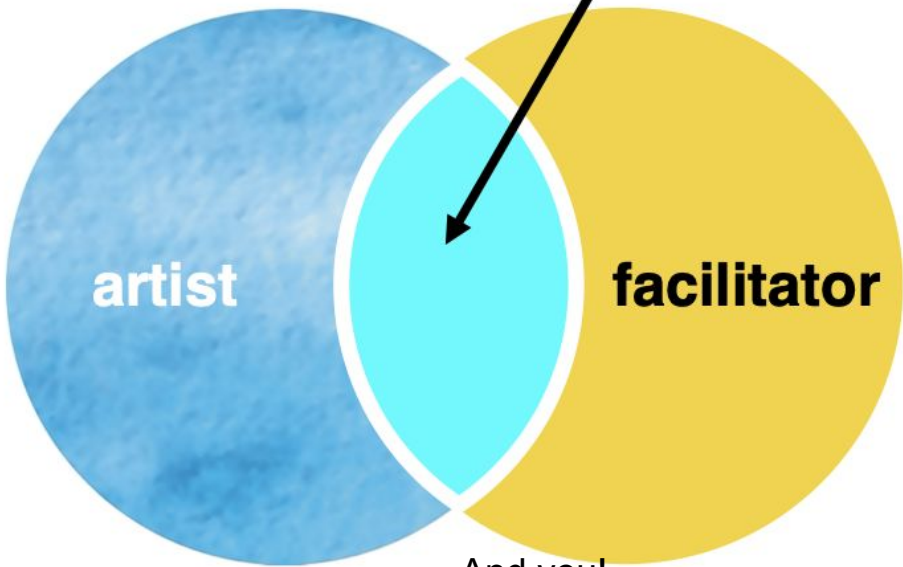
PHOTOS...

add ideas

EASY digital ink



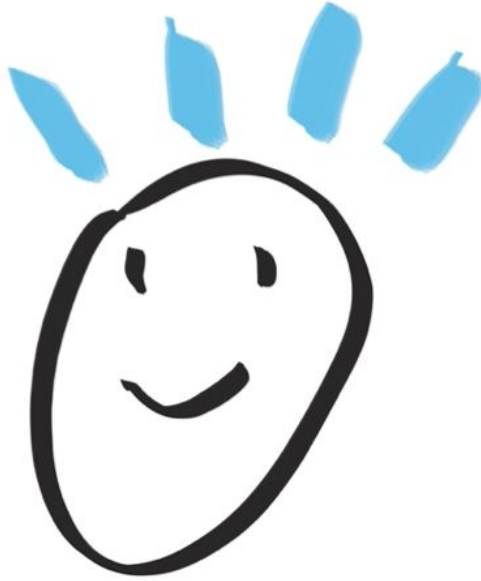
**Me: graphic
facilitator**



And you!



We care when we see our ideas matter.

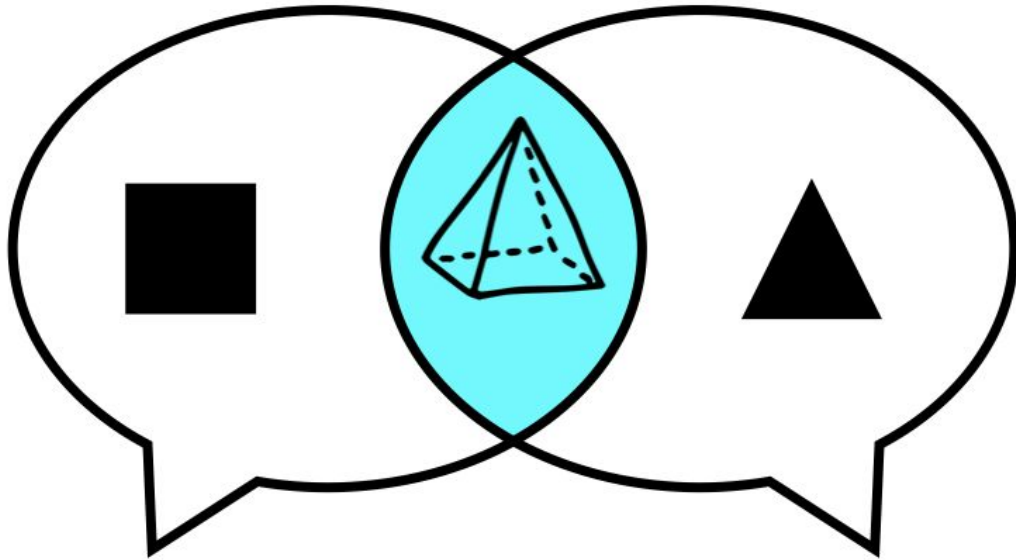


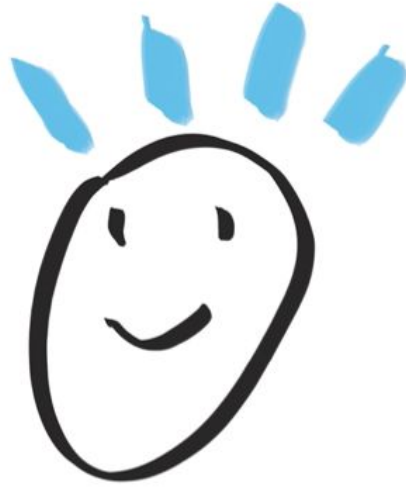
Information makes more sense with visuals.



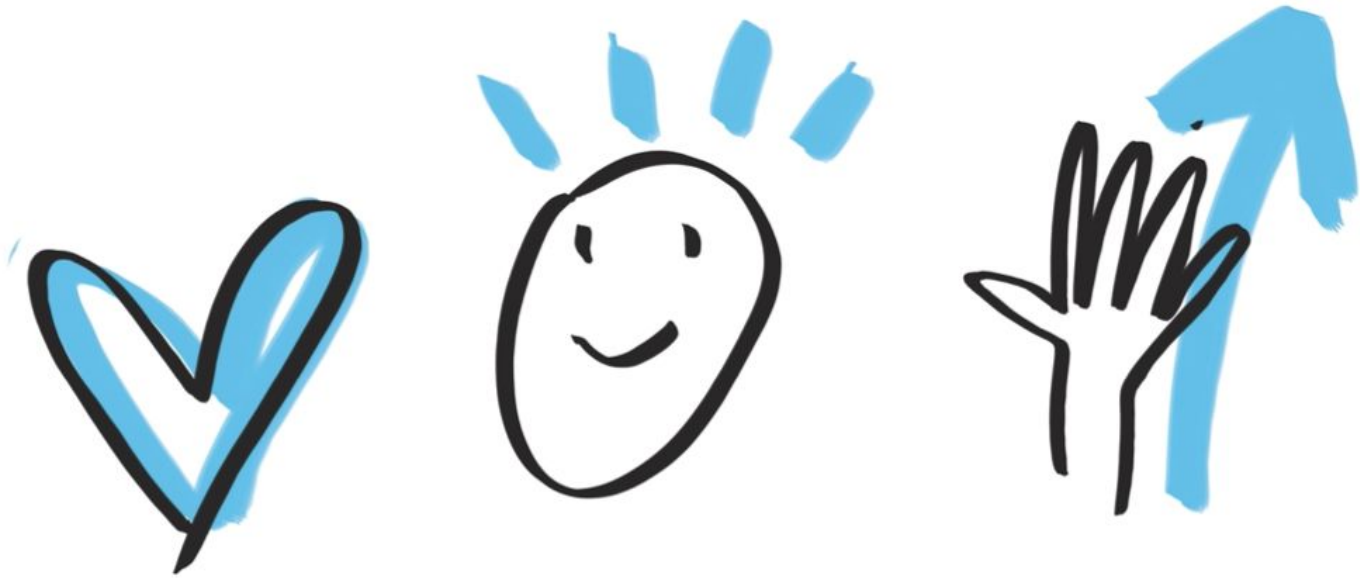
Motivate me with visuals:
I'll want to come along the journey with you.

Visuals help us understand
each other





Visuals affects the way we feel, what we understand, and what actions we take.



You can do any of this ... Welcome to
graphic recording!

It's about Collaborating
and Communicating ideas
(not being perfect)

Visual Vocabulary

SMILING / RECEPTIVE /
OPTIMISTIC



LOOKING / JOURNEYING /
CHANGING



DEMONSTRATING /
OFFERING / EXPLAINING



JOY / CELEBRATION /
EXCITEMENT



different
body
shapes



Head
+
body
+
legs



star
shape
+
feet

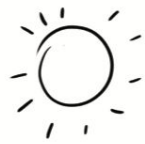
ICONS

PEOPLE CAN BE ALL SHAPES
AND SIZES

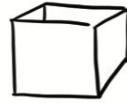
Experiment to find your own style.
Practice until it's consistent. Find
ways to vary your style so it suits the
personality of different projects.



MAP / JOURNEY /
TREASURE



SUN / GOAL / HOPE



BOX / STORAGE



TEXT BANNER /
CELEBRATION



CYCLE / PROCESS /
REFLECTION



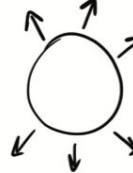
EMPHASIS /
EXCITEMENT



IDEAS / THOUGHTS



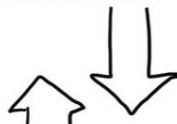
WORDS / SPEECH



EXPANDING CONCEPT



PUBLICATION / RESEARCH



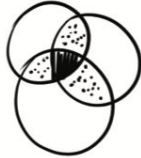
BACK + FORTH /
INCREASE + DECREASE



FUNDING / RESOURCES



VENN DIAGRAM /
2 FACTORS



VENN DIAGRAM /
3 FACTORS

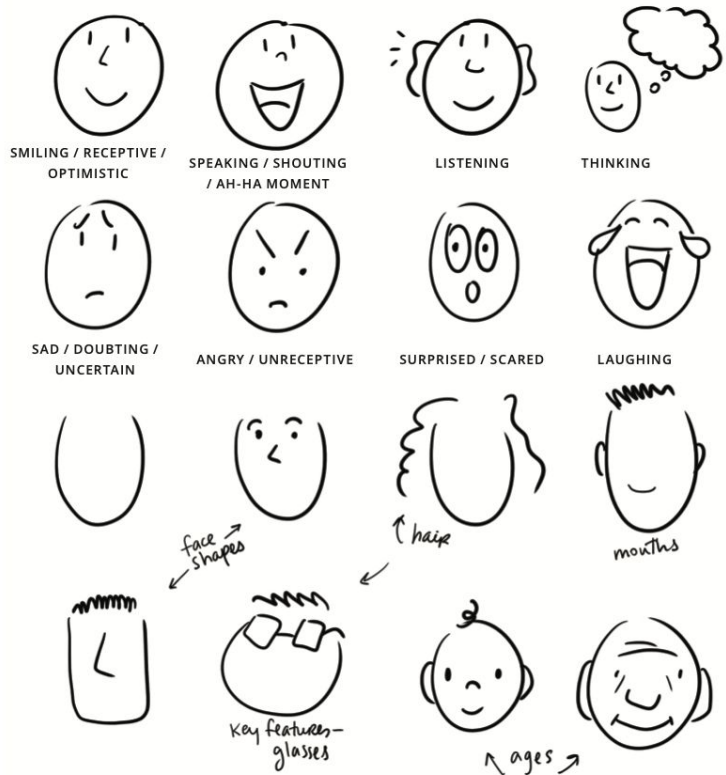


GLOBAL PERSPECTIVE



STRIVING / IMPROVING
CLIMBING

*Abstract concepts can be more
challenging to represent with icons,
but finding creative ways to convey
or clarify ideas is half the fun.*



ICONS

MORE SAMPLES

You don't need specialized drawing skills to use visual language, anyone can do it!



GAP / DISCONNECT / FAILURE



BRIDGE / CONNECTION / SUCCESS



ROADMAP / NAVIGATE / TREASURE



BUILDING / HOME / COMMUNITY / CITY



EYES / WATCHING / ATTENTION / ALERT



HANDS AND HEART / HELPING / CARING



COMPLETE / CHECKLIST VERIFIED / APPROVED



COMPUTER / TECH / INTERNET / COMMUNICATE



EARS / LISTEN / RECEIVE / DIALOGUE



HANDS / VOLUNTEER / CHEER / PARTICIPATE



CLOCK / TIME / TIMING TIMELINESS / SHORT TERM



PROCESS / ORDER / CHECKLIST / RANKING



CALENDAR / SEASONS / LONG TERM / PLANNING



PAPERWORK / RESEARCH / DOCUMENTATION / PUBLISHING



BALANCE / JUSTICE / DECISION MAKING



WRITING / DRAWING / SKETCH / COMMUNICATE

Structuring the Page

Break time!

Tools: for drawing on
paper or digitally

TOOLS + RESOURCES

quality materials from consistent suppliers
enhances your work and professionalism





NEULAND

**FANTASTIC SUPPLIES
FOR VISUAL
FACILIATION
+ MEETINGS**

Here's why I recommend them:

THE MARKERS ARE REFILLABLE - you can replace the nib and also refill the pen with ink.

THEY'RE HIGH QUALITY and come in dozens of colours.

IT'S ALL ABOUT THE DESIGN DETAILS

The pens have a dial to keep your

Special
Price

DIGITAL GRAPHIC RECORDING

PHONE

for backup and troubleshooting

great WIFI or HARDWARE connection

AGENDA
DOCUMENTS

water

HDMI

Adapters + HDMI capture card - nice to have



AHA!

earphones

WACOM ONE



SKETCHES and reference IMAGES

CLIENT LOGO

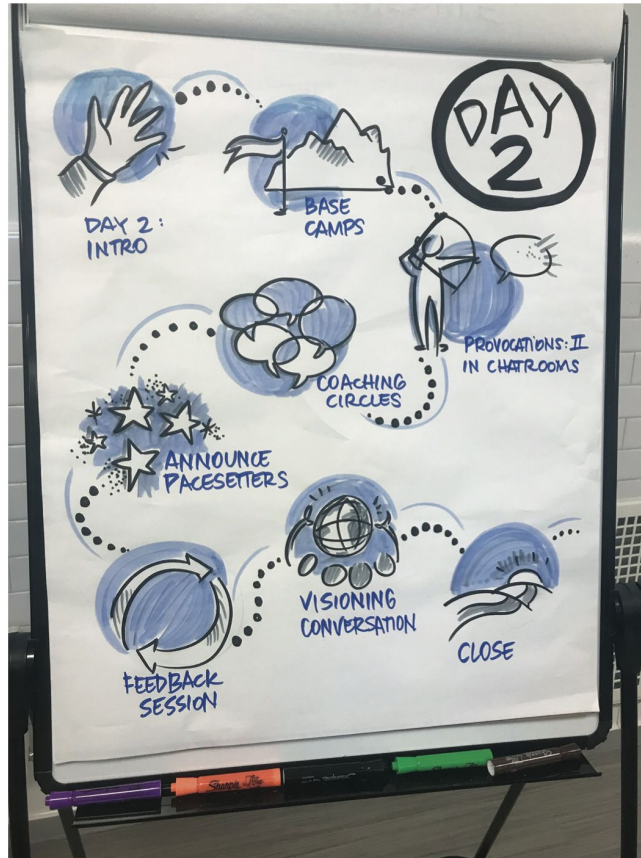
drawingchange 2021

GRAPHIC FACILITATOR

or WACOM CINTIQ

ESSENTIALS

A visual agenda: example



“R
j
y
a
- M
Dr
Th

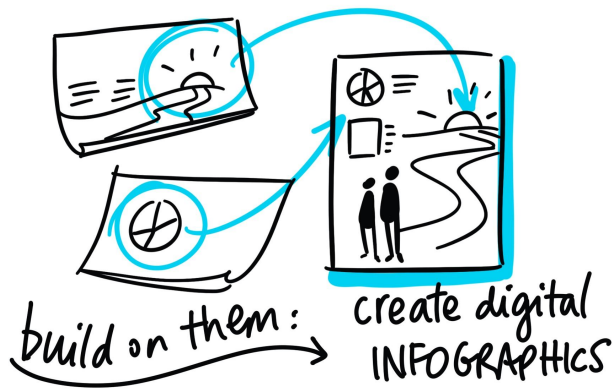
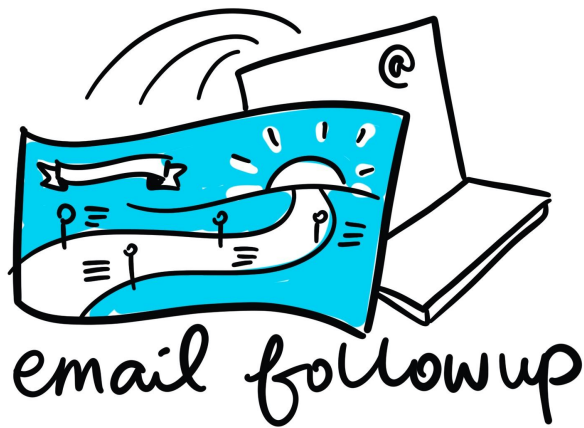
Building blocks of visual practice

LAYOUTS +
TEMPLATES

ICONS

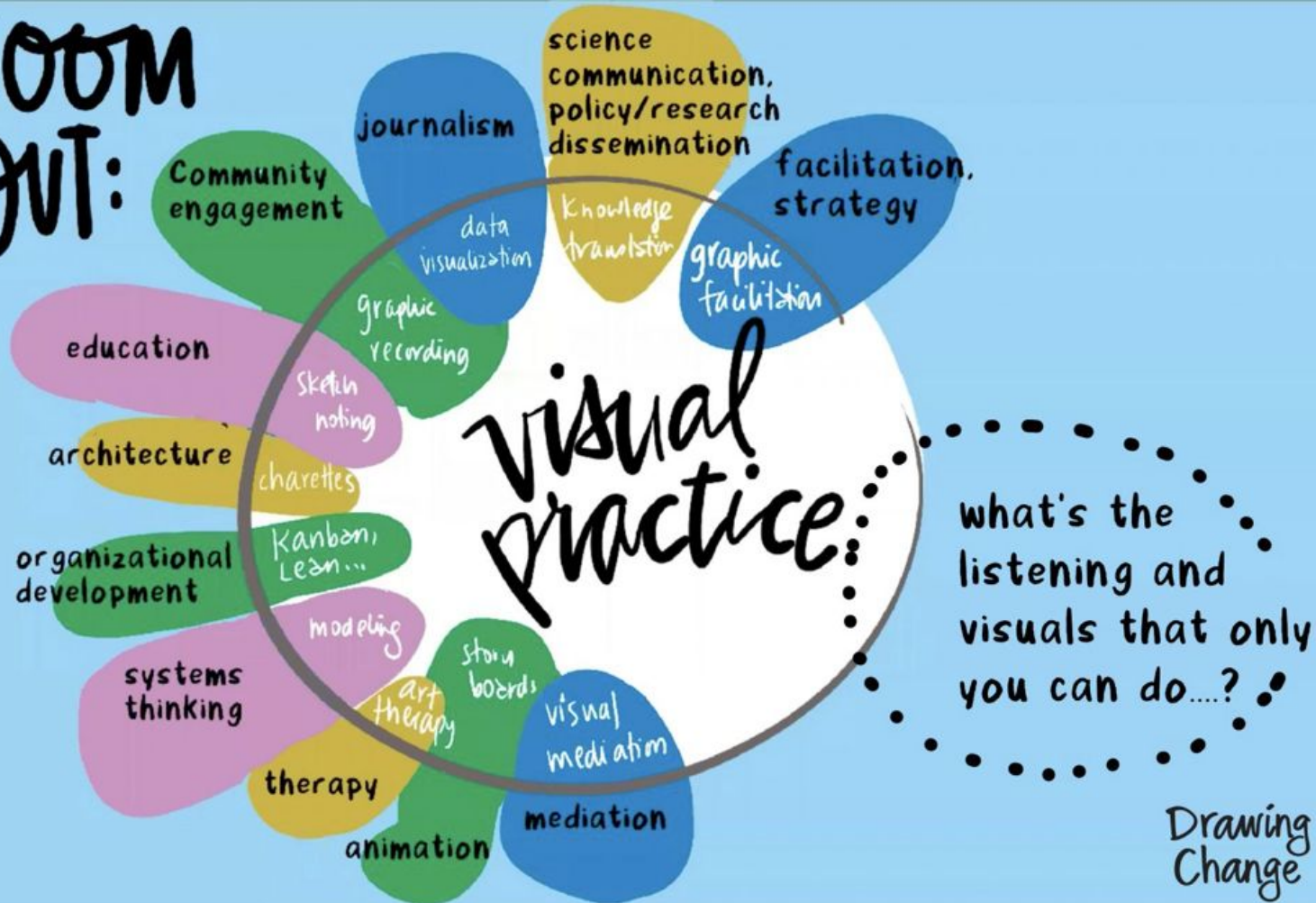
LETTERING

What can you do with
the images after?



What is the bigger
picture ... Visual
Practice?

ZOOM
OUT:



Drawing
Change

Colour

COLOR



DARK COLORS =
TEXT



LIGHT COLORS =
BACKGROUNDS,
ARROWS, DIVIDERS,
BOXES



MAKE a key idea **POP OUT**
By USING A BRIGHT COLOR ↩

MAIN IDEA

↳ SUB idea

- SUPPORTING TEXT

↳ SUB idea

- SUPPORTING TEXT
- SUPPORTING TEXT

@thefuselight

DOG BREEDS

RETRIEVER

HAPPY GO LUCKY
EATS ANYTHING
FLUFFY TAIL

BASSET HOUND

COUCH POTATO
FLOPPY LONG EARS

MAXIMIZING OUR MENTORSHIP



WHITEBOARDING IDEAS

SEPT. 9, 2021

RACISM COLONIAL STRUCTURES

DECOLONIZING EDUCATION

DIFFERENT WAYS OF MEDICINE

FUTURE

Welcome

to Everyone to SHARE their TRUTH

STUDENTS & STAFF

PALMS UP welcome

IT'S a JOURNEY that takes

Time

CANOE? Who is in this? NO HIERARCHY.

cyclical meeting, iterative

seasonal

steering

what isn't said or shown = shadow?

on shore ahead leading

PUTTING on a new CLOAK

unfair loads/burdens

SPACE for SUPPORT & MENTORSHIP

everyone is the SAME level

We all SHARE this WORK

There is HIERARCHY in UNIVERSITY - how can we BRING CIRCLE to UBC?

How can we BRING US all together, and AVOID the DAMS + LOGS

IT'S ALSO a PERSONAL JOURNEY for everyone.

Logs = NOT WORKING TOGETHER. WATER DOESN'T FLOW, RACISM, BARRIER

RELATIONSHIPS

Water fall, paddle upstream?

a LONELY ISOLATING JOURNEY for NEW STUDENTS

CAN'T see Beyond the barriers, CAN'T LAND ASHORE

DAM = BARRIERS

THERE'S NO ONE WAY

People steering their own rafts, own boats

EMPLOYEE EXPERIENCE *Gameplans*

INFORMATION SHARING

all MANAGERS HAVE the ABILITY to COACH and MENTOR



a COLLABORATION HUB for IDEA SHARING to IMPROVE EVERYONE'S Leadership

TIED to PERFORMANCE METRICS

a SENSE of COMMUNITY

GOAL ALIGNMENT

Clear CORPORATE GOALS



the HOW and the WHY

so employees can see How their PERSONAL GOALS CONNECT to BIG OBJECTIVES



Have an ONLINE GOALS DASHBOARD

INTERDEPARTMENTAL KNOWLEDGE SHARING

Mentorship PROGRAM

VIDEOS

TRACK PROGRESS

VIRTUAL and IN-PERSON



BREAK SILOS BY CROSS-DEPARTMENT MENTORS

IMPROVE IDEA SHARING and COLLABORATION

Support GROWTH

Support Women

INCREASE ENGAGEMENT and RETENTION

WE INNOVATED!
 CREATED SOMETHING NEW!
 CONNECTION WAS CRUCIAL FOR GETTING THROUGH THIS TIME
 TOOK TIME TO THINK



COMMUNITY:
 VIRTUAL BROUGHT US TOGETHER



OPENNESS
 TO EXPLORE and ADAPT



TERRY CRANE
 BRUNO GAGNON
 STACY CLARK
 NADIA DROVIN
 JOSEPH PINZON
 MARCELO C. MATTA

What's Next?

CIRCUS IN A POST PANDEMIC WORLD

TRANSFORM
 THEATRE & BROADWAY
 DANCE

WE CANNOT CONTINUE DOING WHAT WE'VE ALWAYS DONE!

We need **MORE DIVERSITY**
 IN GENDER IDENTITY, BODY SHAPES, ABILITIES, WORLD VIEWS, CULTURES

VALUE and OWN **WHO YOU ARE**

INCLUSION

AUTHENTICITY
 IN STORYTELLING, THAT IMPACTS THE AUDIENCE

ART CAN CHANGE YOUR LIFE

WHETHER USING NEW TECH, NEW STYLES

MORE LARGE COLLABORATIONS
 ACCESS TO SCHOOLS
DIVERSITY
 MORE FESTIVALS
 AUTHENTIC STORIES!

IN THE **Next 5 YEARS**

GLOBAL Connections and Sharing



en piste

CircusFest 2021 | September 23-26, 2021

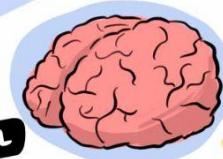
Live graphic recording:
 Tanya Gadsby



Transformative Leadership



THE PRE FRONTAL CORTEX
IS THE CONTROL CENTER OF THE BRAIN



FEAR and STRESS CAN TRIGGER FIGHT, FLIGHT, OR FREEZE

THE BRAIN PROCESSES THE NEGATIVE 9:1 TIMES STRONGER THAN THE POSITIVE

INSPIRING

MARITA CHENG



CURIOSITY

FRANCESCA GINO



WELLBEING

FREDERIKE FABRITIUS



TRACING THE SOCIAL IMPACTS OF COVID19

"all public space is white space" - Emwilye Sparks

WHOSE VOICE?

Some parts of my identity are AMPLIFIED and some SILENCED

Who DESERVES SPACE?

Who is at risk of deportation

Full shifters

PANDEMIC made FAULT LINES CLEAR

GOALS in SUPPORT

Fix international students

IT'S DEHUMANIZING: People are not DISPOSABLE... or UNWORTHY

WHAT MASKS do we have to WEAR?

- mental health
- gender roles

not all of us have the same pandemic EXPERIENCES - like a computer

WHAT IDENTITIES DO COLONIZERS PLACE ON YOU? WHO DEFINES YOU?

TOXIC GENDER MESSAGES

SOME OF MY ESCAPES AREN'T GOING AWAY ANYMORE

OUR STORIES WE ARE THE EXPERTS ON US

INTERNALIZED RACISM

LAYERS OF TRAUMA AFFECTING STUDENTS in crossgression

COLONIZATION

not all of us have the same pandemic EXPERIENCES - like a computer

WHAT IDENTITIES DO COLONIZERS PLACE ON YOU? WHO DEFINES YOU?

TOXIC GENDER MESSAGES

BREATHING LIFE INTO OUR EXPERIENCES

HEALING FOR BIPOC PEOPLE

HEALING MY SELF IS POWERFUL

HEALING FOR BIPOC PEOPLE

HEALING MY SELF IS POWERFUL

HEALING OUR COMMUNITIES

REPRESENTATION MATTERS

FOR PEOPLE OF COLOR, REPRESENTATION OF SUCCESSFUL POC IS IMPORTANT... I CAN LOOK UP TO THEM!

WE M...

MENTAL HEALTH IN A PANDEMIC IS TILTED IN A GIANT OCEAN SWELL - James Witwucki

COMMUNITIES

REPRESENTATION MATTERS

WE MUST UNLEARN COLLECTIVELY

EXPLORING THE DOUBLE EDGED SWORD OF COLONIZATION and LIBERATION IN HIGHER ED

EVERY VOICE IS IMPORTANT!

Acting with INTENTION

Resilience

Read the Calls to Action on MATHews

HOPEFUL LIVED EXPERIENCES

ASK THE HARD QUESTIONS

WHAT CHANGE DO WE WANT TO SEE?

It's hard for students to reach out to their faculty members. The message is that smart things happen outside, people to reach out. Some faculty are afraid to be contacted. Some faculty are not comfortable reaching out to a student.

Students are looking for ways to be heard. They are looking for ways to be heard. They are looking for ways to be heard. They are looking for ways to be heard.

intersecting PANDEMICS

MENTAL HEALTH in a PANDEMIC IS TILTED in a GIANT OCEAN SWELL - James Witwucki

STUDENTS NOT JUST SURVIVING... THRIVING!

Speak the TRUTH

be KNOWN and connected

more EVENTS = more IDEAS = more SOLUTIONS!

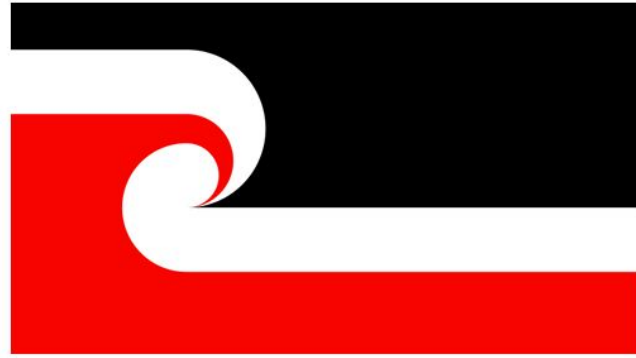
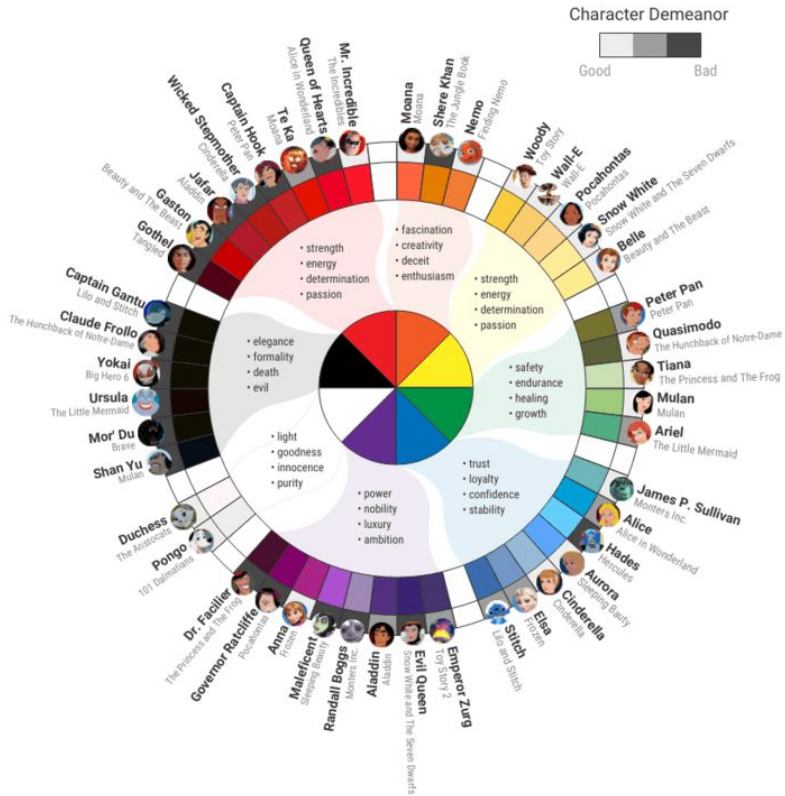
CHANGE beyond THE TALK.

REBUILD

WE HAVE WORK TO DO NOW... acknowledge ROOTS of ISSUES

RECONSTRUCT LAND BACK! DECOLONIZE

The Color Psychology of Disney Characters



The national Māori flag.

Elements of the flag

Te Kawariki's account of its activities, *20 years of protest action 1979-1999*, *Te Kawariki*, explains the elements of the Māori flag:

Black – represents Te Korekore, the realm of Potential Being. It represents the long darkness from whence the world emerged. It represents the heavens. The male element is formless, floating and passive.

White – represents Te Ao Marama, the realm of Being and Light. It is the Physical World. White also symbolises purity, harmony, enlightenment, and balance.

Koru – the curling frond shape, the Koru, represents the unfolding of new life. It represents rebirth and continuity, and offers the promise of renewal and hope for the future.

Red – represents Te Whei Ao, the realm of Coming into Being. It symbolises the female element. It also represents active, flashing, southern, falling, emergence, forest, land and gestation. Red is Papatuanuku, the Earth Mother, the sustainer of all living things. Red is the colour of earth from which the first human was made.

Introduction to Templates

Topic:

instructions:

- Have 1 person per group bring this sheet to save the graphic recorder.

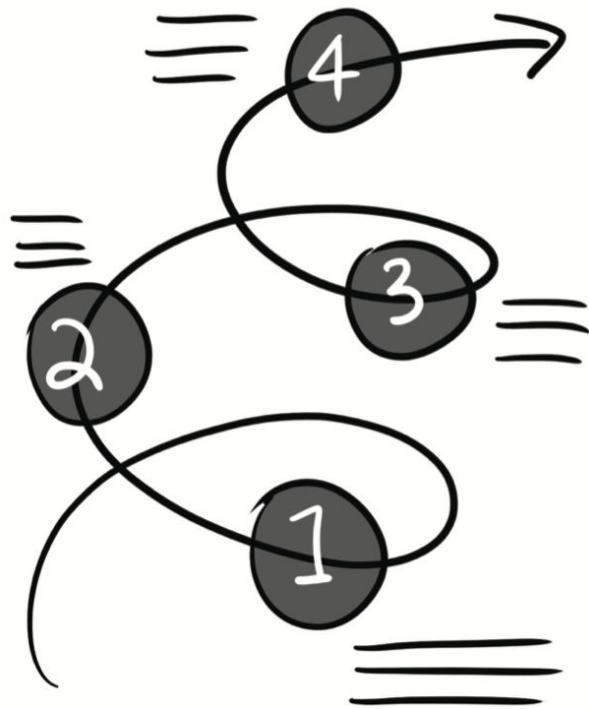
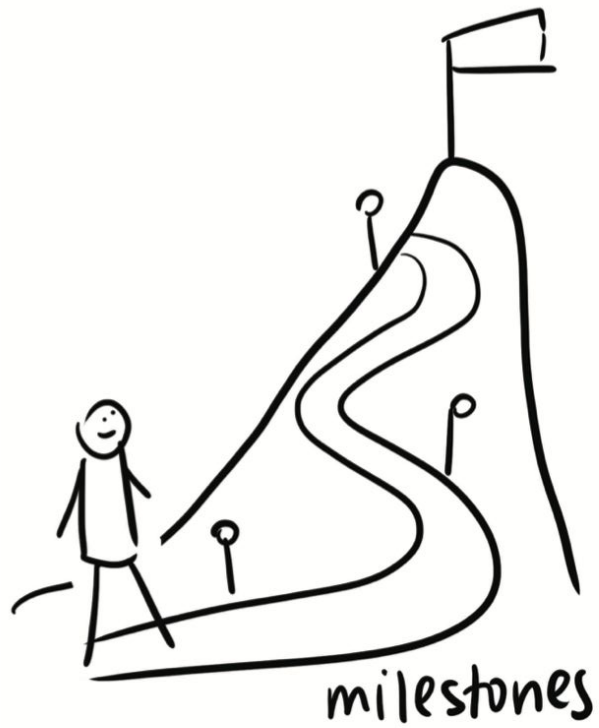


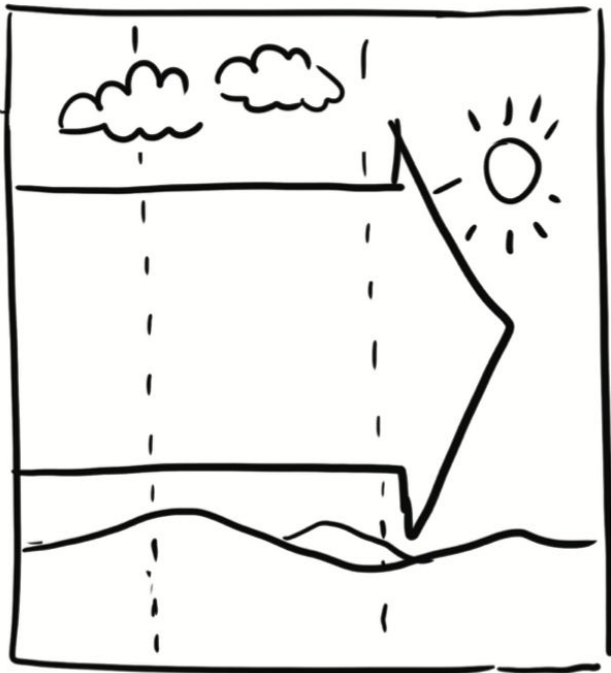
this will become a High level Summary of all the group topics



- you can take additional notes to record your **DISCUSSION**







planning

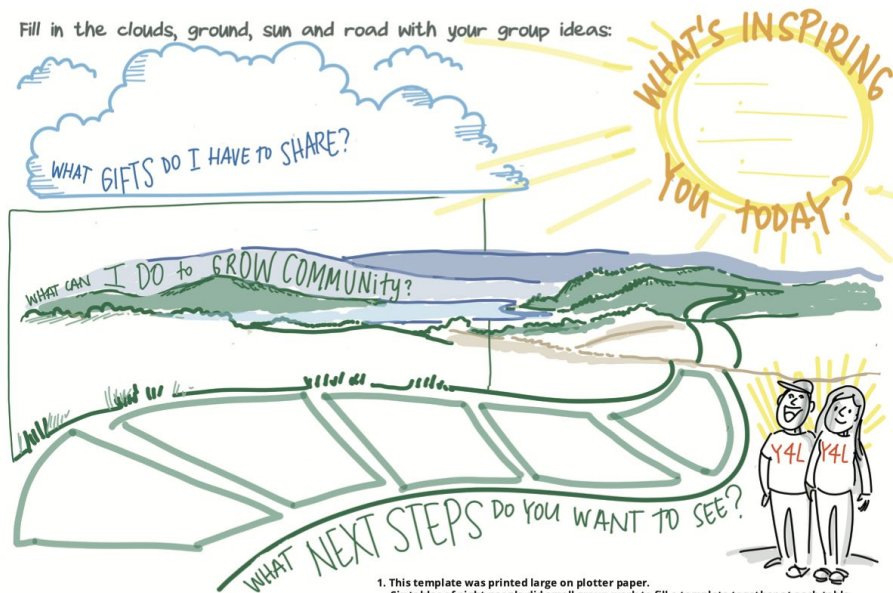


River
of
change

BEFORE

UNFILLED TEMPLATE

Fill in the clouds, ground, sun and road with your group ideas:



1. This template was printed large on plotter paper.
Six tables of eight people did small group work to fill a template together at each table.

Fill in the clouds, ground, sun and road with your group ideas:



2. Then, as a graphic recorder, I listened to each of the small group report outs and filled in a template with a summary of their report-back.

AFTER

COMPLETED TEMPLATE

Using MURAL, Miro, or Jamboard

Simple templates in MURAL



1 Understanding

Review the data presented in the app and identify key themes, red flags, and questions below. [45 min.]

1. WHAT DO THE DATA TELL US ABOUT THIS FAMILY?

Profile info

Primary Care Physician	Specialty	Sub-specialty
Primary Care Physician	Specialty	Sub-specialty
Primary Care Physician	Specialty	Sub-specialty

Patient Data

Age	Gender	Race	Ethnicity
Age	Gender	Race	Ethnicity
Age	Gender	Race	Ethnicity

Core Data

Primary Care Physician	Specialty	Sub-specialty
Primary Care Physician	Specialty	Sub-specialty
Primary Care Physician	Specialty	Sub-specialty

Quality data

Quality	Performance	Process	Structure
Quality	Performance	Process	Structure
Quality	Performance	Process	Structure

Malpractice data

Malpractice	Malpractice	Malpractice	Malpractice
Malpractice	Malpractice	Malpractice	Malpractice
Malpractice	Malpractice	Malpractice	Malpractice

Other data

Other	Other	Other	Other
Other	Other	Other	Other
Other	Other	Other	Other

What other **observations** do you make about these data elements?

□ □ □ □ □ □ □ □

2. WHAT ARE THE MAIN CHALLENGES WITH THIS FAMILY, AND WHERE DO THEY FALL?

Structure

- Quality of care
- Access to care
- Continuity of care
- Coordination of care

Culture

- Teamwork
- Communication
- Learning
- Leadership

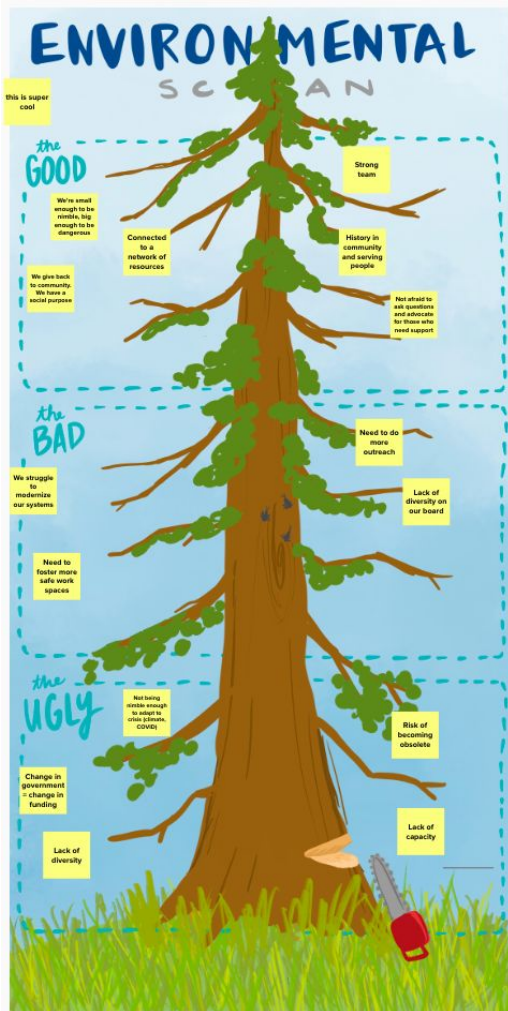
Leadership

- Strategic vision
- Resource allocation
- Performance measurement
- Quality improvement

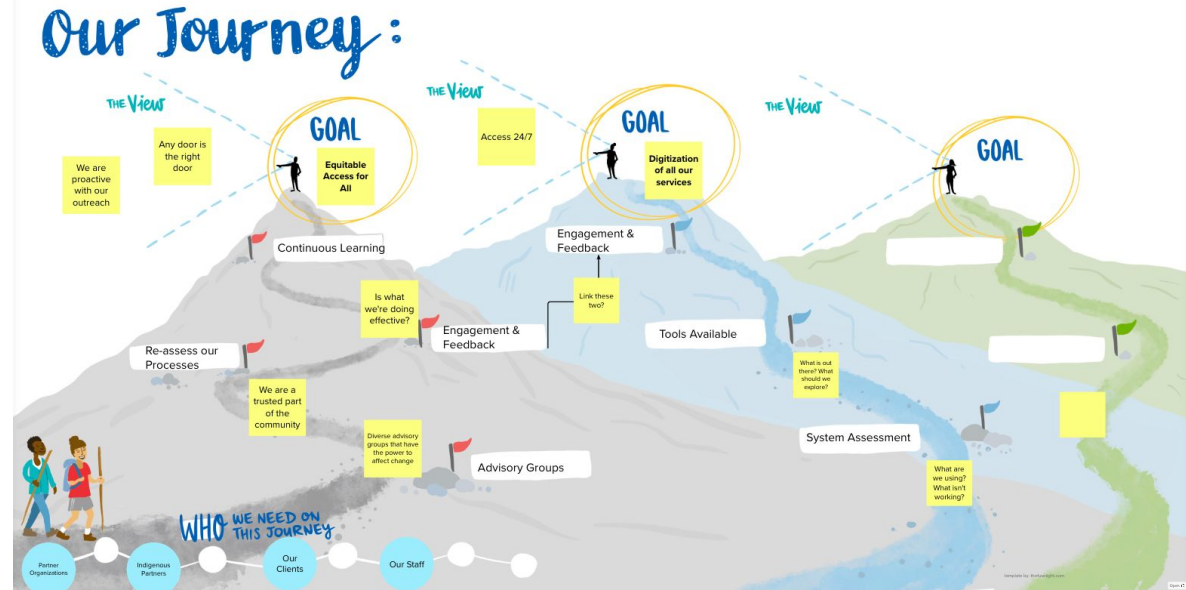
Red flags

In the venn diagram, identify things that are high-risk and urgent by dragging a red flag onto them.

3. AT THE TOP OF THE BOARD, UNDER "CRITICAL ISSUES," LIST THE TOP THREE CRITICAL ISSUES WE NEED TO SOLVE FOR THIS FAMILY



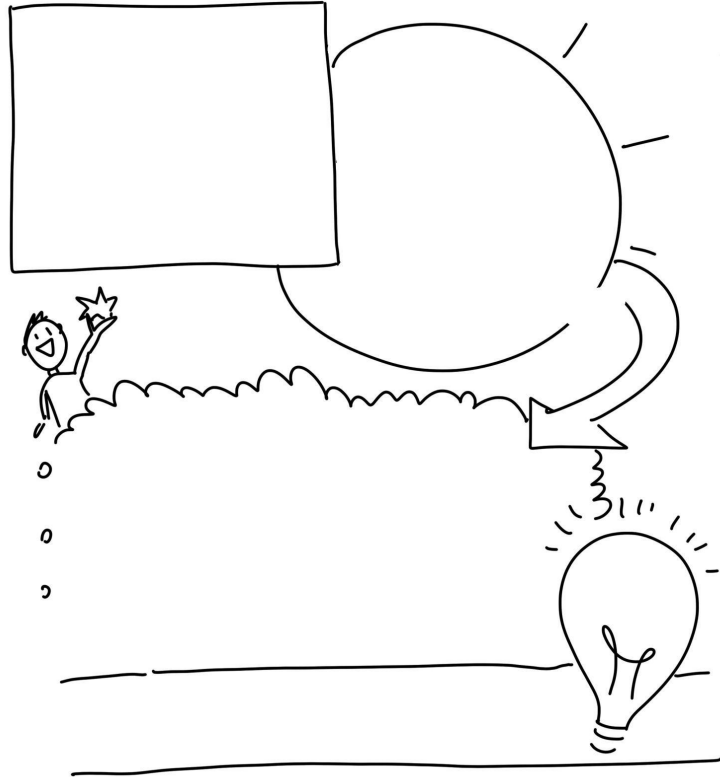
Hand-drawn templates



More detailed,
larger templates

→







TO HELP THE GRAPHIC
RECORDER ... IN
ADDITION TO YOUR **NOTES**

Phase
1

GATHER **KEY** INSIGHTS

2

SUMMARIZE
ON 5
POST-ITS

3



SO THEY CAN BE
HARVESTED IN THE **VISUAL!**

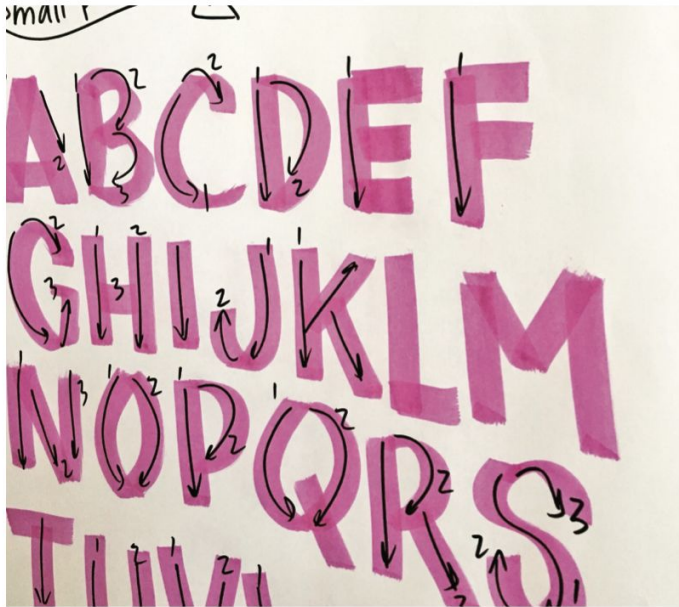
- thanks!

9

IDEAS for SCENARIOS:

- 1) a board needs **5 priorities for the next year**, and a way to get there. What template(s) might help?
- 2) a team needs to identify **strengths, opportunities, risks** for their organization. What template might help?
- 3) What's a **meeting visual note-taking** template?
- 4) Design a template to help someone **declutter their closet**

Lettering



Learning to letter takes practice to build muscle memory, and there is a pattern to how we create letter strokes. We can learn from calligraphers and sign painters, among other experts!

LETTERING

endless inspiration

Core competencies of graphic recording and graphic facilitation include lettering.

It should be clear, consistent - and once you can do that with ease - lettering (especially for titles) can also be fun and creative! I'm always looking for inspirations, and turn to calligraphers, letterpress, type designers, sign painters, fellow visual practitioners, and hand lettering experts like Jessica Hische.



Graphic Recording Samples

CAT KNOWLEDGE EXCHANGE

MEETING: OCT 29, 2020



BC PATIENT SAFETY & QUALITY COUNCIL

LIBERATING STRUCTURES + WISE CROWDS: CHALLENGE

Keep **LIFTING** each other UP



Set aside what you don't need, today...



We're on ZOOM... ANYTHING COULD HAPPEN! :)



WHO ARE YOU? WHERE ARE YOU? WHAT ARE YOU NERVOUS + EXCITED ABOUT?

CONNECT

...and stay connected!

HOW CAN WE BEST engage PEERS?



SOME SOLUTIONS:

- Living wages for PEERS recognize EXPERTISE
- LISTEN TO PEERS - and ANSWER the CALL to ACTION!

have the UNCOMFORTABLE conversations!



HELPING EACH OTHER TO SHARE CHALLENGES AND SOLUTIONS

- BUILD TRUST
- SHARE UNDERSTANDING
- REAL SOLUTIONS

LIFT UP YOUR VOICE UNTIL YOU SOAR

CATs are ACROSS BC



THE MINISTRY IS COMMITTED TO SUPPORTING COMMUNITY... including 35 CATs!

COVID IS AMPLIFYING RISKS FOR PEOPLE WHO USE SUBSTANCES...



Justine Patterson Executive Director, Overdose Emergency Response Centre, Ministry of Mental Health + Addictions

LISTENING to People with LIVED EXPERIENCE + THEIR FAMILIES



Make meetings about PARTICIPATION!



3,2,1... Post!

thinking about The CAT Knowledge exchange... One place I think I will use these skills and tools is

YOU HAVE SURVIVED 100% OF YOUR WORST DAYS...

IN THIS MEETING - REACH OUT TO THE SUPPORT TEAM

tools: LIBERATING STRUCTURES.COM

LIVE GRAPHIC RECORDING | Drawing Change Sam Bradd

SHIFT

TRACING THE SOCIAL IMPACTS OF COVID-19

OUR STORIES WE ARE THE EXPERTS ON US

BREATHING LIFE INTO OUR EXPERIENCES

HEALING OUR COMMUNITIES

REPRESENTATION MATTERS

HEALING FOR BIPOC PEOPLE

HEALING MY SELF IS POWERFUL

MENTAL HEALTH IN A PANDEMIC IS TILTED IN A GIANT OCEAN SWELL - JAMES WITWICKI

WHO DESERVES SPACE?

WHOSE VOICE?

IT'S DEHUMANIZING: People are not DISPOSABLE... or UNWORTHY!

WHAT MASKS do we have to WEAR?

SOME OF MY ESCAPES AREN'T GOING AWAY ANYMORE

NOT ALL OF US HAVE THE SAME PAINFUL EXPERIENCES - LIKE A COMPUTER

WHAT IDENTITIES DO COLONIZERS PLACE ON YOU? WHO DEFINES YOU?

TOXIC GENDER MESSAGES

COLONIZATION

INTERNALIZED RACISM

LAYERS OF TRAUMA AFFECTING STUDENTS

INT'L SUPPORT

Fix international students

GOALS in SUPPORT

PANDEMIC MADE FAULT LINES CLEAR

STOLEN LAND

not all public space is white space - Estuqui Marks

Some parts of my identity are AMPLIFIED - and some SILENCED

WHO DESERVES SPACE?

risk of deportation

Full shifters

FOR PEOPLE OF COLOR, REPRESENTATION OF SUCCESSFUL POC IS IMPORTANT... I CAN LOOK UP TO THEM!

HEALING FOR BIPOC PEOPLE

HEALING MY SELF IS POWERFUL

MENTAL HEALTH IN A PANDEMIC IS TILTED IN A GIANT OCEAN SWELL - JAMES WITWICKI

REPRESENTATION MATTERS

HEALING OUR COMMUNITIES

BREATHING LIFE INTO OUR EXPERIENCES

OUR STORIES WE ARE THE EXPERTS ON US

HEALING FOR BIPOC PEOPLE

HEALING MY SELF IS POWERFUL

MENTAL HEALTH IN A PANDEMIC IS TILTED IN A GIANT OCEAN SWELL - JAMES WITWICKI

STUDENTS NOT JUST SURVIVING... THRIVING!

EVERY VOICE IS IMPORTANT!

WE MUST UNLEARN COLLECTIVELY

EXPLORING THE DOUBLE EDGED SWORD OF COLONIZATION and LIBERATION IN HIGHER ED

WHAT CHANGE DO WE WANT TO SEE?

RESILIENCE

ACTING WITH INTENTION

READ THE CALLS TO ACTION ON MATHS

HOPEFUL LIVED EXPERIENCES

ASK THE HARD QUESTIONS

CHANGE beyond THE TALK.

REBUILD

WE HAVE WORK TO DO NOW... acknowledge ROOTS of ISSUES

RECONSTRUCT LAND BACK DECOLONIZE

MENTAL HEALTH IN A PANDEMIC IS TILTED IN A GIANT OCEAN SWELL - JAMES WITWICKI

EVERY VOICE IS IMPORTANT!

ACTING WITH INTENTION

HOPEFUL LIVED EXPERIENCES

ASK THE HARD QUESTIONS

CHANGE beyond THE TALK.

REBUILD

WE HAVE WORK TO DO NOW... acknowledge ROOTS of ISSUES

RECONSTRUCT LAND BACK DECOLONIZE

STUDENTS NOT JUST SURVIVING... THRIVING!

EVERY VOICE IS IMPORTANT!

ACTING WITH INTENTION

HOPEFUL LIVED EXPERIENCES

ASK THE HARD QUESTIONS

CHANGE beyond THE TALK.

REBUILD

WE HAVE WORK TO DO NOW... acknowledge ROOTS of ISSUES

RECONSTRUCT LAND BACK DECOLONIZE

MENTAL HEALTH IN A PANDEMIC IS TILTED IN A GIANT OCEAN SWELL - JAMES WITWICKI

EVERY VOICE IS IMPORTANT!

ACTING WITH INTENTION

HOPEFUL LIVED EXPERIENCES

ASK THE HARD QUESTIONS

CHANGE beyond THE TALK.

REBUILD

WE HAVE WORK TO DO NOW... acknowledge ROOTS of ISSUES

RECONSTRUCT LAND BACK DECOLONIZE

STUDENTS NOT JUST SURVIVING... THRIVING!

EVERY VOICE IS IMPORTANT!

ACTING WITH INTENTION

HOPEFUL LIVED EXPERIENCES

ASK THE HARD QUESTIONS

CHANGE beyond THE TALK.

REBUILD

WE HAVE WORK TO DO NOW... acknowledge ROOTS of ISSUES

RECONSTRUCT LAND BACK DECOLONIZE

MENTAL HEALTH IN A PANDEMIC IS TILTED IN A GIANT OCEAN SWELL - JAMES WITWICKI

EVERY VOICE IS IMPORTANT!

ACTING WITH INTENTION

HOPEFUL LIVED EXPERIENCES

ASK THE HARD QUESTIONS

CHANGE beyond THE TALK.

REBUILD

WE HAVE WORK TO DO NOW... acknowledge ROOTS of ISSUES

RECONSTRUCT LAND BACK DECOLONIZE

NOV 12 • 2020
Co-hosted by UCalgary and Community

WELCOME TO THESE DIALOGUES:

- Socio-Economic Challenges Facing our Communities
- Response, Recovery and Resilience in the Age of COVID-19
- Equity, Diversity and Inclusion: How Has Systemic Racism Impacted Racialized Communities?

PARTNERSHIPS

To work across silos, and listen and learn from each other... to build back with RESILIENCE!

DR. REG CROWSHOE, ELDER in RESIDENCE

SANCTIFIED KINDNESS



Shared with ALL LIVING THINGS

A SMUDGE - to OPEN THIS AS A SAFE SPACE, TO SAY WHAT'S NEEDED

NOT EVERY GROUP STARTS IN THE SAME PLACE

TREATY + ELDER + KNOWLEDGE KEEPER

It took me 100 HOURS TO RE-DO MY ANTI-RACISM COURSE ONLINE...

WE ALL LOSE WHEN WE CAN'T ALL PARTICIPATE. MORE COLLABORATION

TIMELY RESPONSES TO NEEDS: eg METIS NATION DONATING CHROMEBOOKS

EQUITY ISSUES - including digital access

SEEING HOW IT'S ALL CONNECTED



OPPORTUNITIES

CELEBRATING METIS WEEK

COMMUNITY CONVERSATIONS

RECIPROCITY

LOOK at THE PROCESS: What CAN we do, when we can't do what we USUALLY do?

WHAT ARE STRUCTURAL ISSUES WE FACE

I AM ON A LEARNING JOURNEY...

INCLUSION MEANS MY LIVED EXPERIENCE

INDIGENOUS STUDENTS + FACULTY ARE STRETCHED... + WE NEED SUPPORT

DO NOT STEREOTYPE... AMPLIFY INDIGENOUS WOMEN'S VOICES!

WHERE CAN I BEST START?

TRADITIONAL TERRITORIES OF TREATY 7 and METIS NATION OF ALBERTA REGION 3

NORTHERN ANIMAL HEALTH SERVICES LANDSCAPE

DR JOHN VanLeeuwen
Julia Bland



OUR RESEARCH -
WHAT GROUPS/INDIVIDUALS
ARE PROVIDING ANIMAL CARE
SERVICES IN THE NORTH?

- WHO?
- WHERE?
- WHAT ANIMALS?

35 ORGANIZATIONS
PROVIDED SERVICES
→ TO 167 NORTHERN
COMMUNITIES

- 88% WORKED WITH
AT LEAST 1 INDIGENOUS
COMMUNITY

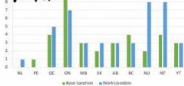
- ✓ vet colleges (5/5)
- ✓ humane societies (9)
- ✗ other orgs (14)
- ✓ rescue



MAPPING

- communities of
100+ people in the
3 territories

WHERE'S THE
WORK:



NEW DATABASE

- ! 34 communities
have LITTLE TO
NO ACCESS TO
VET CARE

- ! NEW TOOL TO
CLARIFY WHO'S
DOING WHAT, WHERE

MAPPING
SERVICES
• EXAMS • VACCINATION
• SURGERY
• PARASITE CONTROL
• STERILIZATION
... and more



Sambradd, Sept 2020

CLARIFY WHO, WHAT, WHERE

BETTER COORDINATION

ENSURE HOUSING CARE

INVOLVE NORTHERN PARTNERS



CLIMATE ACTION LEADERSHIP LESSONS FROM COVID19



there's no VACCINE for CLIMATE CHANGE!

RESILIENCE BY DESIGN
Innovation Lab

Not incremental change...
We're at a **NEW PORTAL**
What are we leaving?

radical change is possible...
we're CAPABLE!

WHAT WORLD DO WE WANT?

- SENDAI FRAMEWORK
- PARIS AGREEMENT
- SUSTAINABLE DEVELOPMENT GOALS

We need to address the causes, not symptoms...and economic, social and environmental vulnerabilities...and with HUMAN RIGHTS

HOW DO WE COMMUNICATE this?

audiences have DIFFERENT NEEDS...
psychological barriers with controversial topics...
connect the dots
Climate conversation coach tool

- BE SENSITIVE
- USE FACTS WITHIN STORIES + VALUES-BASED NARRATIVE
- ACKNOWLEDGE THE SHIFT..

values-based LANGUAGE

A RESILIENCE ROAD MAP FOR A JUST TRANSITION

We are in a **Pause** in "NORMAL"...

Something is about to **CHANGE** but we can't DELAY..

- X disconnected...
- X Fossil FUELS...
- X Corporate agendas

INEQUITY + CRISES
WITH COVID and CLIMATE

GAPS are more clear...

THIS COVID CONTEXT IS UNCERTAIN...
and COVID is a **CRISIS** within a CLIMATE CRISIS!

MOBILIZE!
Let's treat an EMERGENCY... like an EMERGENCY!
science • media • decision makers...

DR. ROBIN COX



NIGEL DEANS



ANTONIA PARVIN



ANOTHER WORLD IS POSSIBLE...



YOUTH CLIMATE STRIKES
195 COUNTRIES!

a whole generation stepping into **LEADERSHIP**
COURAGE!

OUR LIVES DEPEND ON IT

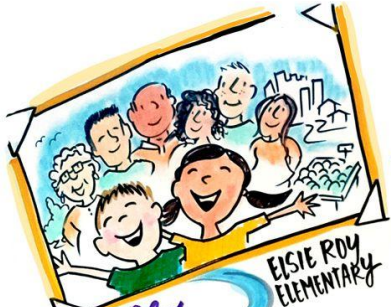
OUR WORK CONTINUES ONLINE

"We are UNSTOPPABLE!"

ELSIE ROY ELEMENTARY

@Goals

JAN 19/15



ELSIE ROY ELEMENTARY

FEELINGS / BEHAVIOUR:
TO PLACE A STRONGER EMPHASIS + TIME ON SOCIOEMOTIONAL LEARNING THROUGHOUT THE SCHOOL.

LEARNING:
TO CREATE AN ENVIRONMENT OF LEARNERS WHO HAVE A GROWTH MINDSET TO PURSUE CRITICAL THINKING, CREATIVITY + INNOVATION.

COMMUNITY:
TO BUILD COMMUNITY THROUGH POSITIVE, COLLABORATIVE RELATIONSHIPS WITH STUDENTS, COLLEAGUES, FAMILIES AND COMMUNITY PARTNERS.

Gather resources of our community Partners into a 'master list.'

How we'll get there: Develop a school-wide social emotional learning scope + sequence

student-centered learning



examples:
• active, engaged listening

Respect

Truth
Trust

Our Values

Peace

Freedom

Integrity

Happiness

Love

students being genuine

mindfulness and stress management

showing interest in learning in many ways

Communicating values clearly

children are engaged, playful and involved in creative ways

Even on a hard road... we always care! teaching from the heart

HEALTH + ENVIRONMENT

TO CONNECT WITH THE OUTSIDE ENVIRONMENT TO FACILITATE DEEPER LEARNING AND PROMOTE PHYSICAL + MENTAL WELL-BEING.

Display and share activities where we are connecting with the environment

ATTITUDE:
TO SUPPORT A POSITIVE + DIVERSE SCHOOL ENVIRONMENT

Everyone does ongoing daily acts of kindness

ORCAS:

Ownership

Respect

Compassion

Achievement

Safety



Students first!

live graphic recording Sambradd



UBC PRESIDENT'S ROUNDTABLE

UBC'S ROLE IN INTEGRATION and MIGRATION



TO SUPPORT STUDENTS!



UBC'S VOICE MATTERS!

UBC AS A SETTLEMENT COMMUNITY

- Advocate for PR for students
- We WALK the TALK - as an employer
- We lead the WAY



INSTITUTION-BUILDING

- TOWARDS BETTER COLLABORATION
- ADVISORY COUNCIL, AND a centre - formalize it
- create something sustainable + long-term
- not just at Pt. Grey
- teaching HUB

RESEARCH ADVISORY COMMITTEE

- Where should it be located?
- limitations of project based funding = off the side of blue desks, needs \$
- RECIPROCAL accountability



COMMUNITY CAPACITY + KNOWLEDGE MOBILIZATION

- TRAININGS
- HIRING COMMUNITY MEMBERS
- DEMOCRATIZING WHO HAS INFLUENCE/INPUT
- SPECIFIC NEEDS FOR NEWCOMERS + PEOPLE WITH DISABILITIES
- NEED TO MAP WHAT EXISTS...



SUPPORT YOUTH

- MORE DATA!
- INVOLVE YOUNG PEOPLE
- CREATING OPPORTUNITIES TO ACCESS EDUCATION
- WE NEED A COMPREHENSIVE PLAN

PATHWAY

RACIAL EQUITY

- WHAT WILL DECOLONIZED LEADERSHIP LOOK LIKE?
 - In the settlement sector and at UBC
- CENTRE YOUTH AS LEADERS
- BUILD ON EMERGING WORK around SYSTEMIC CHANGE at UBC (+ Nationally)



HEALTHY SCHOOLS



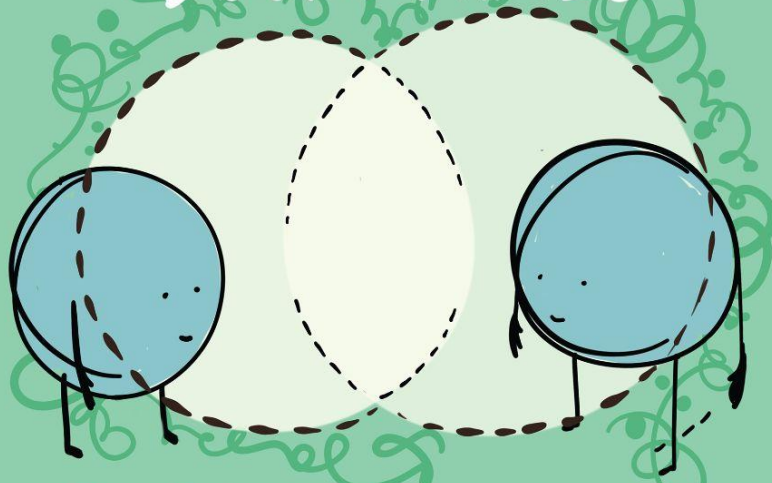
Leadership Symposium

Wellbeing & Schools



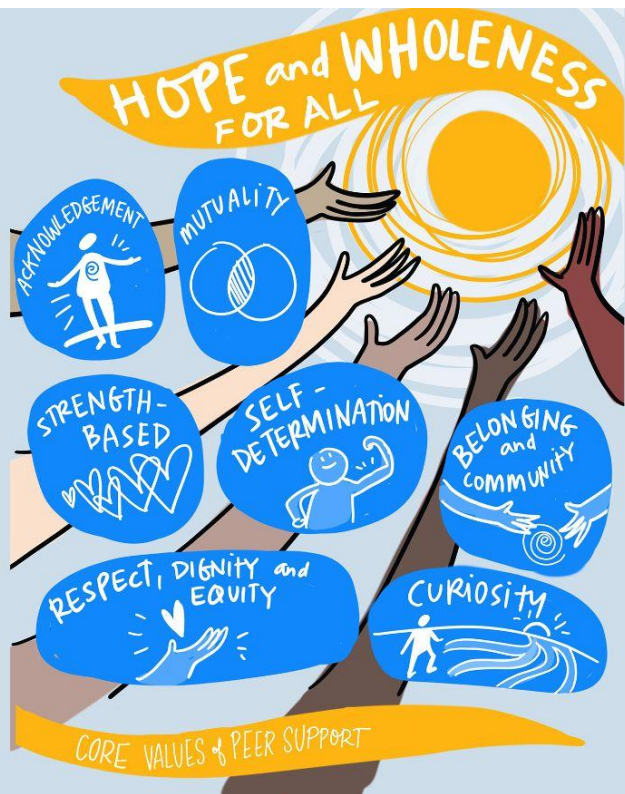
Studio work samples -
not drawn live

WE CAN CO-CREATE
BOUNDARIES



**TOGETHER, LET'S FIGURE OUT WHAT
WORKS FOR US.**

BC Campus, by Drawing Change



BC Campus, by Drawing Change

THEORY OF CHANGE



More Reading:

Essential 8

Levels of Listening

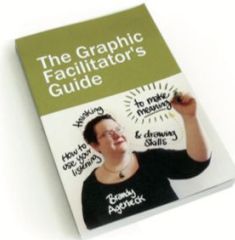
Types of Listening

The Essential 8 from Brandy Agerbeck
at Loosetooth.com is a crucial building
block for any new practitioner:

- 1) lettering
- 2) bullets
- 3) colour
- 4) line
- 5) arrows
- 6) people
- 7) boxes
- 8) shading

The Essential Eight

by Brandy Agerbeck, Loosetooth.com



Excerpted from

The Graphic Facilitator's Guide: How to use
your listening, thinking and drawing skills to
make meaning
pages 171-174

Copyright © 2012 Brandy Agerbeck, Loosetooth.com. All
rights reserved.

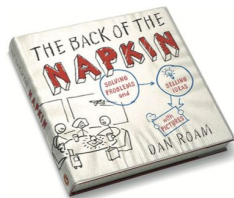
2012 BRANDY AGERBECK

All rights reserved

LOOSETOOTH.COM

additional information
and video available at:

loosetooth.com/theGFlab/E8.htm



2008 DAN ROAM
All rights reserved

BACKOFTHENAPKIN.COM

best selling author, speaker,
and visual practitioner

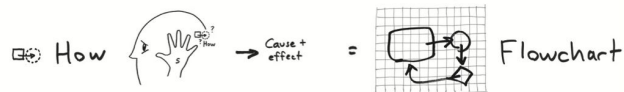
THE <6><6> RULE

SEE :

SHOW:



8



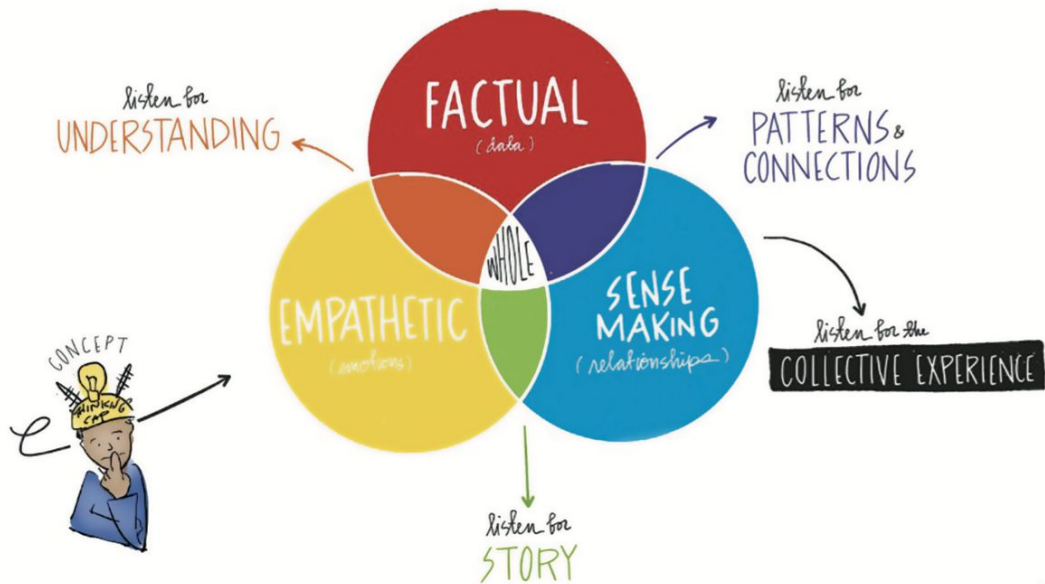
excerpt from:

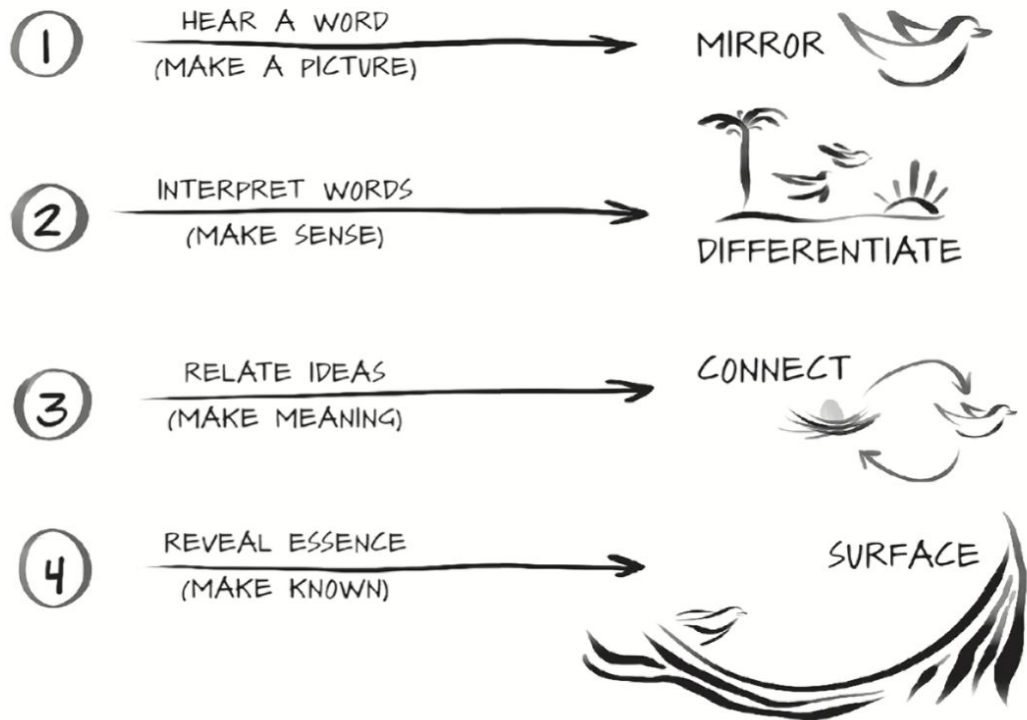
THE BACK OF THE NAPKIN: Solving Problems and Selling Ideas with Pictures

by Dan Roam | available as a free download www.danroam.com/napkin-tools-no

LISTENING

Listening FILTERS





FOUR LEVELS of SCRIBING

2018 KELVY BIRD

All rights reserved

KELVYBIRD.COM

author,
visual practitioner,
and speaker

-

based on:

Otto Scharmer's FOUR LEVELS OF LISTENING

www.kelvybird.com/4-levels-of-scribing

Technology

DIGITAL SCRIBING SET-UP: SCREEN SHARE

zoom meeting su...

MIGRATION of BIRDS

DEFINITION!
LONG DISTANCE TRAVEL, REPEATED over TIME

WHY DO BIRDS MIGRATE? OR WHY?

- FOOD
- BREEDING SAFETY
- OLDER & LARGER BIRDS SING
- LESS COMPETITION
- EARLY ACCESS TO TERRITORY

IT MUST KNOW: WHERE & HOW TO GET THERE?

SMALL BIRDS DON'T HAVE OLDER BIRDS TO FOLLOW... IT'S PROGRAMMED

DO THEY USE THE SUN?

DO THEY USE THE MAGNETIC FIELD?

IS IT BASED ON WEATHER?

SHALL BIRDS EXPEND A LOT OF ENERGY

INTERNAL CLOCK GOES OFF

"FATTEN UP!"
"REDUCE REPRODUCTION!"

USE GRAPHIC RECORDING: TANYA GARDNER @thefuselight

IN LATE 19th CENTURY

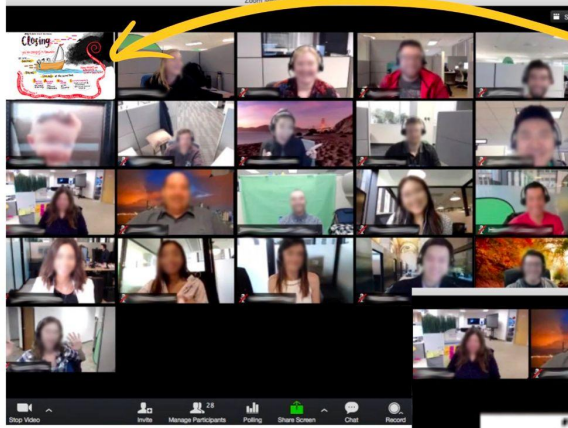
WHERE DO SWALLOWS GO IN WINTER?

WITH KING MANOPO LEO

FOUND THE BIRDS IN AFRICA

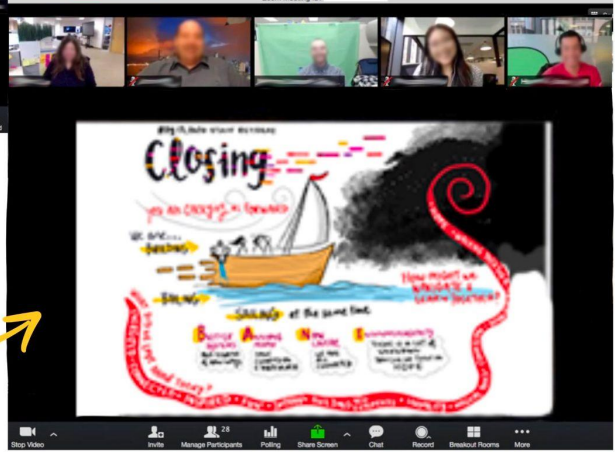
@thefuselight

DIGITAL SCRIBING SET-UP: SPOTLIGHT THE GRAPHIC



GRAPHIC IS A "PARTICIPANT" IN THE CALL

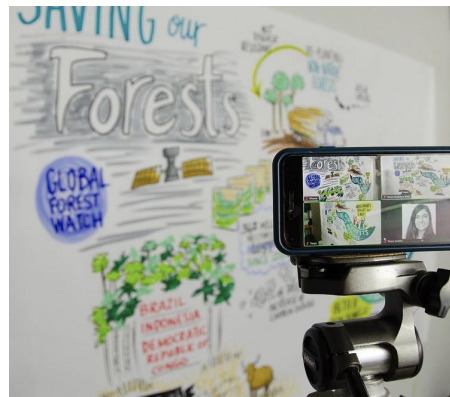
PEOPLE CAN CHOOSE TO "PIN" OR "SPOTLIGHT THE GRAPHIC AT THEIR LEISURE



@thefuselight

PAPER SCRIBING SET-UP

THE LEFT & RIGHT ANGLES GIVE A **3D FEEL** TO THE GRAPHICS



THE SIDE CAMERAS PROVIDE A **CLEARER VIEW** OF THE DETAILS



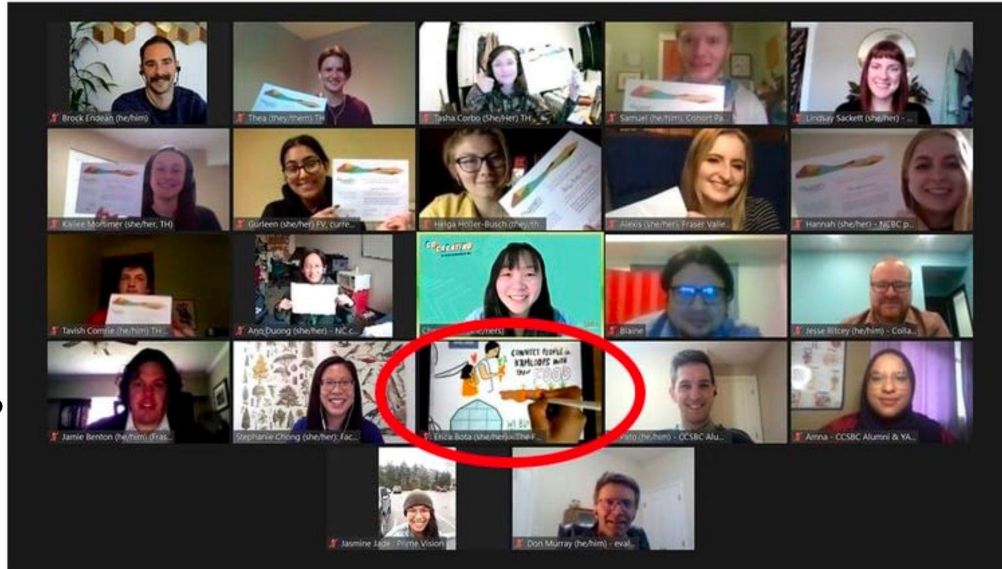
PAPER SCRIBING SET-UP

PEOPLE CAN CHOOSE TO "PIN" OR "SPOT-LIGHT" ANY OF THE THREE VIEWS AT THEIR LEISURE

@thefuselight



fbcyouthprogram



@thefuseight

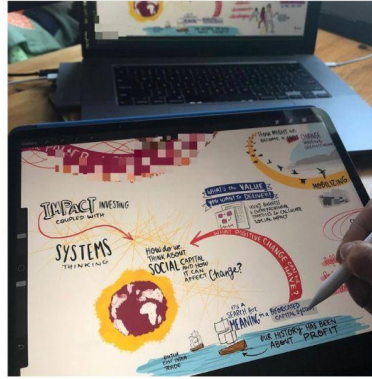
DIGITAL SCRIBING SET-UP: **LIVE STREAM**



DRAWING TABLETS



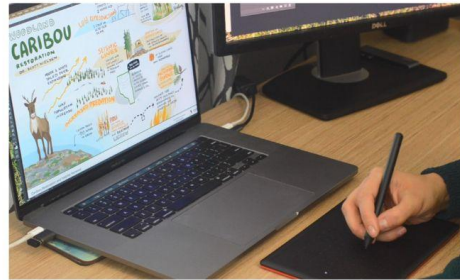
SURFACE PRO



iPAD

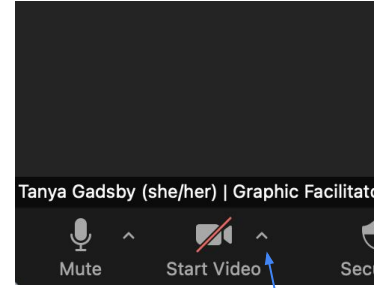
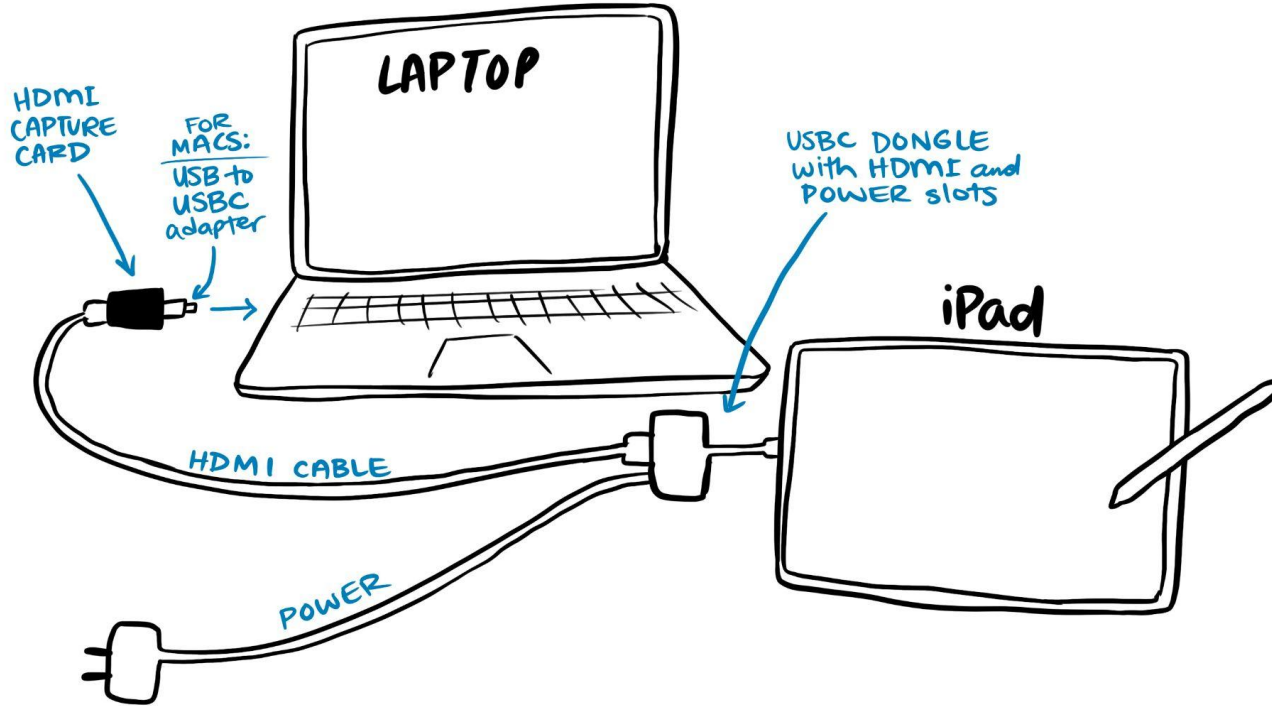


WACOM ONE



ONE BY WACOM

HDMI CAPTURE CARD (cabled connection)

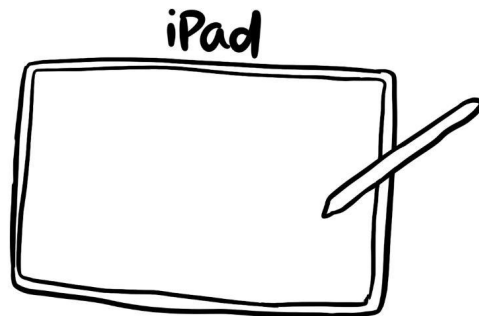


IN ZOOM, CLICK the
"CARROT" NEXT TO
START VIDEO TO
CHOOSE THE iPad
(usually listed as "capture
card" or "USB device")

AIRSERVER (or similar WIFI BROADCASTER)



- 1 → DOWNLOAD AIRSERVER to your COMPUTER
- 2 → OPEN AIRSERVER WHEN READY TO SHARE



- 3 DRAG DOWN FROM UPPER RIGHT ON IPAD
- 4 CHOOSE "SCREEN MIRROR" AND SELECT YOUR COMPUTER

APPS for DRAWING

iPad

- PROCREATE
- CONCEPTS
- ADOBE FRESCO

PC OR MAC

- PHOTOSHOP
- ONE NOTE (PC)
- AUTODESK SKETCHBOOK
- KRITA



COMMERCIAL REAL REAL ESTATE, THE BUILT ENVIRONMENT, AND OUR LOW-CARBON FUTURE

DANNA BURKLEY | LARRY BENTLEY | JIM ANDERSON

HOW CAN WE GET TO A LOW-CARBON FUTURE?

ESG ENVIRONMENT SOCIAL GOVERNANCE

8-10% HIGHER MARKET VALUE OF GREEN BUILDINGS

INVESTORS ARE REPORTING ON ESG! HOW ARE YOU REPORTING ON DATA?

CLIMATE RISK DATA

HOW CAN YOU MITIGATE RISK?

DEMAND FOR INCLUSIVE AND STABLE SPACE, DATA

AIR QUALITY HAS A MAJOR IMPACT ON COGNITION!

SUSTAINABILITY IS A PART OF EVERYTHING

ENVIRONMENT + SUSTAINABILITY ARE LINKED

CANADA'S Energy FUTURE

OUR PRIORITIES

- ENERGIZING COMMUNITIES
- GLOBAL LEADERSHIP + MARKET ACCESS
- NEW ENERGY VISION

WE WANT TO MAXIMIZE OUR SUSTAINABILITY

ENERGY DEMANDS

HOW CAN WE ALL COLLABORATE? GOVERNMENT + BUSINESS

USA

EUROPE

ASIA

YARDI

EXCELLENCE BUILDING

NEW BUILDINGS

TO

Key CONSIDERATIONS

1. DIVERSITY HAS TO BE HANDLED WITH QUALITY
2. CHANGE IS ORGANIC
3. RANGE & DENSITY
4. STAGED TRANSIT

MAKE COMMUNITIES

PEOPLE AREN'T BEEN ON DENSITY, GROWING UP CARS, CHANGING HOW THEY LIVE!

WHAT CHANGES WOULD BE NECESSARY TO SUPPORT THIS?



Enhancements

Graphic Recording

Use a sticky note to leave your reactions, additions, or changes to the graphic!

What's Next?
CIRCUS IN A POST PANDEMIC WORLD

CONNECTION
WE ANNOTATED!
CREATED SOMETHING NEW!
CONNECTION HAS CHANGED THE WAY WE GET TOGETHER SINCE THE TIME
TOOK TIME TO THINK

COMMUNITY:
VIRTUAL BROUGHT US TOGETHER
TEAM WORK
SOCIAL EVENTS
VIRTUAL MEETS

TRANSFORM
THEATRE & BROADWAY
DANCE
WE CANNOT CONTINUE DOING WHAT WE'VE ALWAYS DONE!
WE NEED MORE DIVERSITY IN GENDER IDENTITY, BODY SHAPES, ABILITIES, WORLD VIEWS, CULTURES
NOISY DISCUSSION
VALUE and OWN WHO YOU ARE

AUTHENTICITY
IN STORYTELLING, THAT IMPACTS THE AUDIENCE
WHETHER USING NEW TECH, NEW STYLES, ART CAN CHANGE YOUR LIFE

OPENNESS
TO EXPLORE and ADAPT

DRIVE THRU CIRCUS!

ACCESS TO SCHOOLS
DIVERSITY
MORE FESTIVALS
AUTHENTIC STORIES!
IN THE NEXT 5 YEARS

GLOBAL CONNECTIONS and Sharing

BEADY'S INTERNATIONAL CIRCUS FEST

an piste

CircusFest 2021 | September 23-26, 2021

Can we get the main countries we collaborate with?
Australia, Canada, USA, UK, Germany, Spain, South Korea

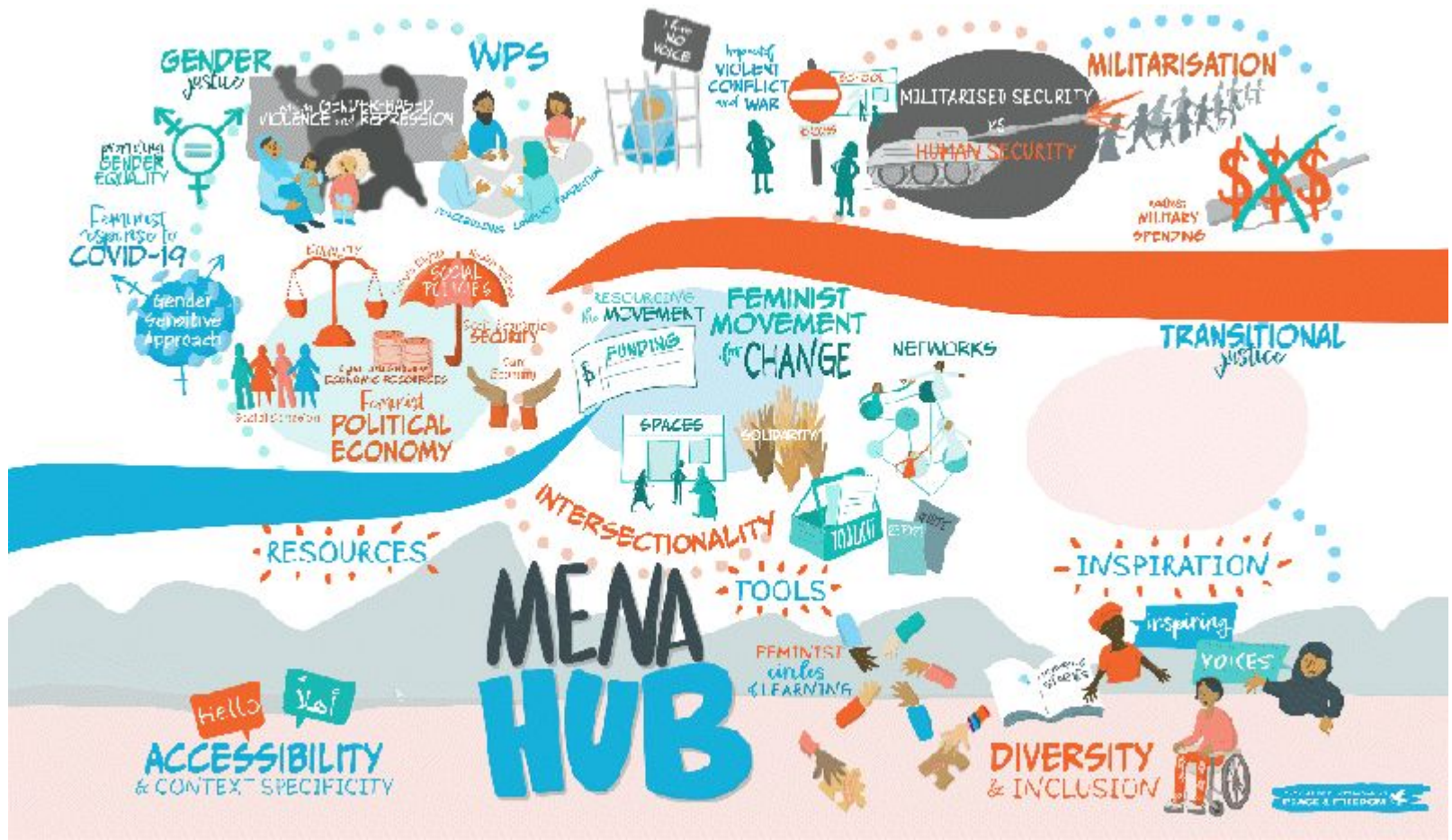
Live graphic recording
Tanja Gestaly

fueight

Please add festivals and ad hoc gatherings

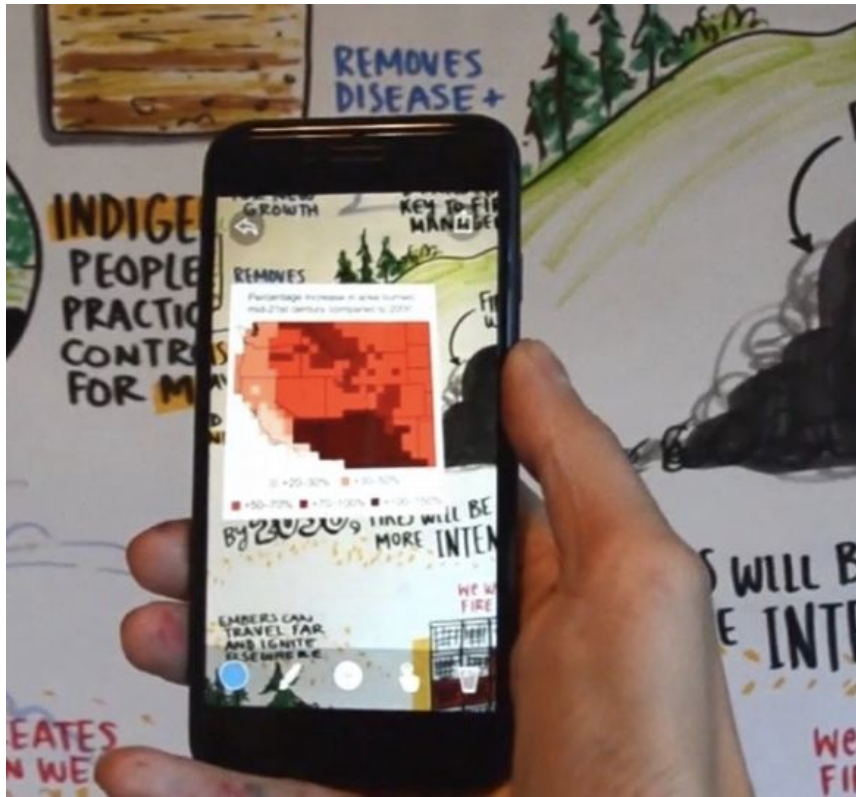
Please add Membership Program 3

Can we get the main countries we collaborate with?
Australia, Canada, USA, UK, Germany, Spain, South Korea



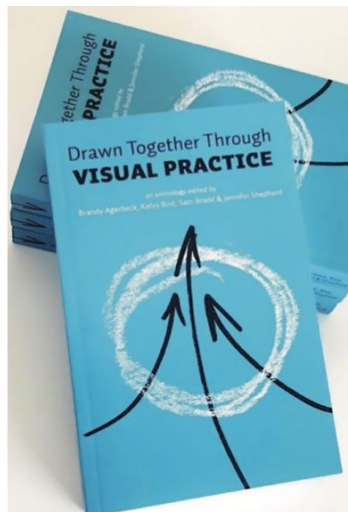
Animations

Clickable Graphics



Books and Resources!

+ Reading list online

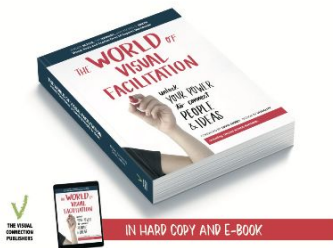


DRAWN TOGETHER THROUGH VISUAL PRACTICE

[2016]

Sam initiated and co-edited *Drawn Together Through Visual Practice* with **Brandy Agerbeck, Kelvy Bird** and **Jennifer Shepherd**. Imagine your ideas drawn — incorporating energy, colour, space, line, scale, icons, figures, metaphors. This is the territory of visual practice. Visual practice makes the fleeting nature of spoken conversation concrete. *Drawn Together through Visual Practice* demonstrates the power of **visuals as a sensemaking device** in an age of unprecedented complexity.

Download a free chapter:
visualpracticebook.com/free-gift/



THE VISUAL CONNECTION PUBLISHERS

THE VISUAL FACILITATION FIELD GUIDE

[New for 2020]

Sam has contributed two chapters to this anthology — with **80 chapters and 50 authors**, this comprehensive book should be on everyone's shelf.

Working visually helps people to connect, engage, and collaborate.

This book teaches you how:
<https://theworldofvisualfacilitation.com>

Downloads to Help You Practice

Thankful for the opportunity to share my lettering passion at IFVP 2016 in DC, I created a series of handouts (practice sheets and exemplars). To download the one below, [click here](#). There is a full-color version also available for purchase [here](#).



letslettertogether.com

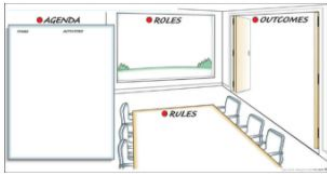


This exemplar has been converted to greyscale and modified to fit a letter-sized sheet of paper.

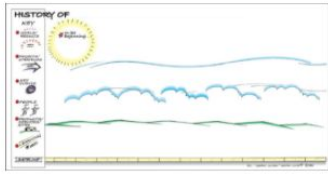
The full-color original can be purchased at <http://bit.ly/NeulandPoster56>



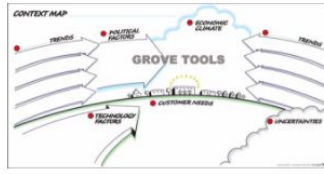
Heather Martinez's Tips for Lettering



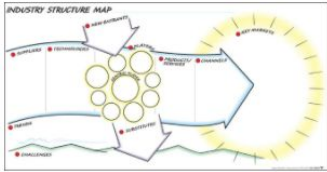
Meeting Startup - Meeting Room
from \$9.00



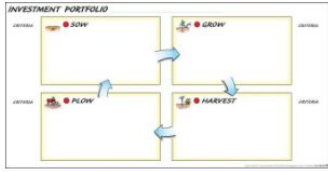
Graphic History
from \$9.00



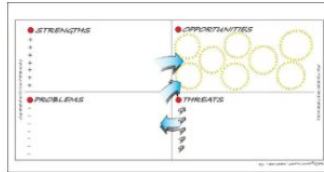
Context Map
from \$9.00



Industry Structure Map
from \$9.00

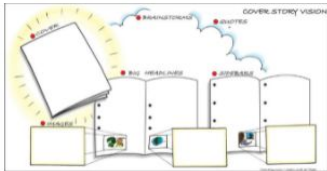


Investment Portfolio
from \$9.00

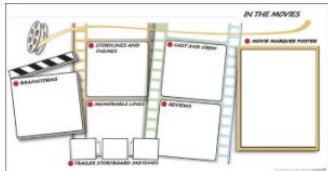


SPOT Matrix
from \$9.00

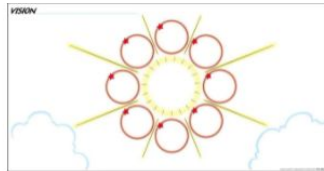
Templates for order from the Grove



Cover Story Vision
from \$9.00



In The Movies Vision
from \$9.00



Mandala Vision
from \$9.00

